



mccall
gardens

COVID-19 Update

OCTOBER 2021

Dear participants & families,

From the 11th October, eased restrictions will allow those who are fully vaccinated to have more freedoms. As a disability service provider NSW Health provides us with regular updates on the best way to manage the situation and enforces greater or lesser restrictions than those advertised more broadly to the general public. As soon as we receive this information we conduct a risk assessment and make adjustments to services to ensure we are able to minimise risk to staff and participants.

The following provides an outline on the changes that McCall Gardens will introduce from the 11th October.



Masks

- Residents are encouraged to wear masks in indoor settings
- Staff and visitors are required to wear a mask at all times

QR Codes

- Services NSW COVID Safe Check-in required for visitors

Visiting Family and Friends

- Two visitors per resident will be allowed each day. Visits are preferred to take place outdoors or in the resident's room.
- Proof of COVID-19 vaccination will be required for visitors
- Visitors will be required to produce a negative COVID test 48 hours prior to the visit

Community Access

- Residents will be able to access recreation facilities, personal services, non-critical retail, hospitality venues and events, where COVID safe

Travel

- Travel within Greater Sydney permitted

Planning Your Visit

1. Book your visit in advance by contacting the group home
2. Complete the Visitors Declaration Form (see link below)
3. Provide evidence of your vaccination
4. Provide evidence of your negative COVID-19 test
5. Masks required at all times
6. Complete QR Check-in and sanitise your hands upon arrival
7. Gather outdoors wherever possible, or in the residents bedroom
8. Minimise contact with others in the home and maintain social distancing

Frequently Asked Questions

Q: I would like to go on a picnic with a resident, is this allowed?

Q: Can a resident visit me in my home?

Q: Am I able to take a resident for a drive?

Q: Can a resident stay with me overnight?

A: Yes, is the answer to all the above questions, as long as you agree to follow the NSW Health guidelines, you will be required to wear a mask when in close contact, provide evidence of your full COVID-19 vaccination status and produce a negative COVID test 48 hours prior to the visit. For stays longer than 7 days, please speak to the Team leader for further information as additional requirements apply.

Q: Do people under 16 years of age count towards the two visitors per day?

A: No, people under 16 years of age do not count towards the two visitors per day.

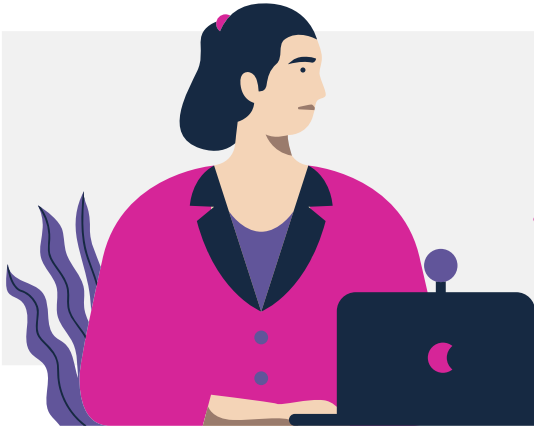
Q: I have a mask exemption/vaccine exemption, can I still visit?

A: This will be assessed on a case by case basis. Please speak to the team Leader for further information.

You can access our COVID-19 Resources and Visitor Declaration Form by clicking the links below.

[COVID-19 Resources](#)

[Visitor Declaration Form](#)



Administration

- The administration office will open from 8am-4pm with limited staff on a rotational roster
- Administration staff are able to continue to work from home, if reasonably practicable
- Maintenance staff will continue to work on site and homes as required
- Visitors to the administration office will be in line with the Site Access Policy
- The administration office must be accessed using the main entrance only
- Masks are required in indoor settings
- Services NSW COVID Safe Check-in required

**Thank you for playing your part
to help stop the spread!**



CONTACT

 **Belinda Colombrita**
CEO
 **0409 740 817**
 **belinda.colombrita@mccallgardens.org.au**

 **Belinda Reeves**
OPERATIONS MANAGER
 **0499 599 061**
 **belinda.reeves@mccallgardens.org.au**