



Our COVID-19 Response

JUNE 2021

Dear participants & families,

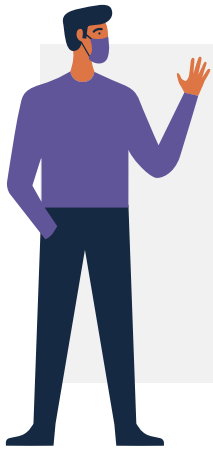
The following provides an outline on the changes that McCall has introduced as result of the recent changes to the NSW Health directives that affect our community.

We understand that this may be a difficult time for many and we are here to assist as best we can. If you require any further information please do not hesitate to reach out to the Team Leader or Operations Manager, Belinda Reeves or myself at any time.

As a disability service provider NSW Health provides us with regular updates on the best way to manage the situation and enforces greater or lesser restrictions than those advertised more broadly to the general public. As soon as we receive this information we conduct a risk assessment and make adjustments to services to ensure we are able to minimise risk to staff and participants.

We can confirm that all sites have suitable PPE and a process of frequent sanitisation of all areas to minimise any spread of infection.

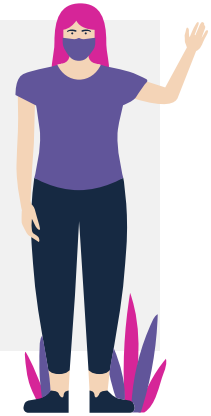
Below are the changes that took effect on Saturday 26 June at 11:59pm.



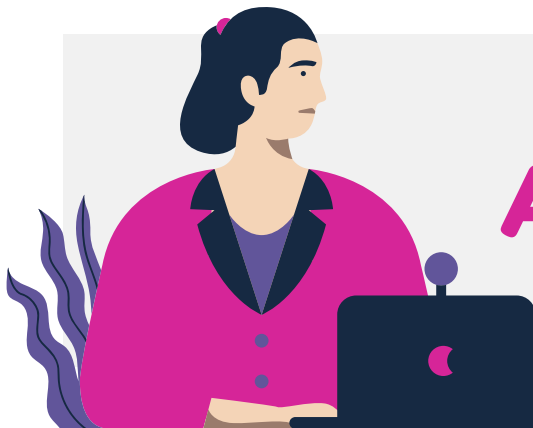
Supported Independent Living (Group Homes)

- Residential disability facilities located in Greater Sydney (including the Blue Mountains, Central Coast, Wollongong and Shellharbour) must exclude all visitors, except those providing essential caring functions.
- For all other facilities located in NSW, all staff and visitors must wear a surgical mask, only two visitors per resident should be allowed each day. Visits should be in the resident's room and no visitors are permitted from Greater Sydney (including the Blue Mountains, Central Coast, Wollongong and Shellharbour).
- All essential medical / Allied Health appointments to continue.
- Personal trainers are not included as a medical appointment.
- CPP staff will be on site to provide community participation for regular hours. This may include trips to a park for the 1 hour of exercise.
- Sue Hawkins Cottage and Ivy Ave is available for all homes for delivery of programs. Bookings to be made through Belinda Reeves via email.
- All staff who attend Sue Hawkins Cottage/Ivy Ave are responsible to sanitise as they leave.
- Residents that usually attend work or external day programs are to remain at home and will be supported by McCall Staff in their home.

Community Participation, SLES & School Holiday Programs



- McCall residents who access McCall CPP to have the service provided from their group home.
- Residents to be provided supports in house groups.
- Non McCall residents are given the option to attend if they choose, there may be some changes in the current programs due to staff availabilities during this period . It is noted that some of the families who have participants that attend are essential workers and we will aim to support through this time.
- NSW Health have confirmed that disability services can continue if suitable space, ventilation and programs can be assessed to be safe for staff and participants.



Administration

- You must work from home, unless your home circumstance permit you from working.
- Maintenance – will continue to work on site and homes as required.

CONTACT

 **Belinda Colombrita**
CEO
 **0409 740 817**
 **belinda.colombrita@mccallgardens.org.au**

 **Belinda Reeves**
OPERATIONS MANAGER
 **0499 599 061**
 **belinda.reeves@mccallgardens.org.au**